

Programming | Setting Limits from an IR Transmitter

Setting Limits Overview

The Open and Close Limits can be set from the EDU, a CCI, keypad or IR transmitter with at least: an Open, Close, Raise and Lower buttons.

The advantage of setting limits remotely from a keypad, IR transmitter, or CCI, is these components are generally easier to access. Setting limits at the EDU may be simpler, and can be done before addressing the system, depending upon the installation.

The Open and Close Limits determine how far an EDU will travel. When the open button is pressed on a Keypad, IR transmitter, or CCI, the EDU will move to the Open Limit. When the close button is pressed on a keypad, IR transmitter, or CCI, the EDU will move to the Close Limit. The EDU will not move higher than the Open Limit or lower than the Close Limit.

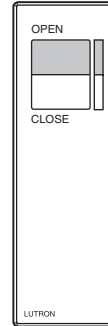
Notes:

- The system must be addressed in order to set limits from a keypad, CCI, or IR transmitter.
- When setting limits from a keypad, IR transmitter or CCI, each EDU will move approximately 8–10" as it is selected. Be certain each EDU can move this distance in each direction.
- Setting the Open Limit lower than the Close Limit will cause the shade to move down when raise is pressed and up when lower is pressed.
- Once EDUs have been assigned to keypads, CCIs, and IR receivers, limits can only be set on an EDU, using the keypads, CCIs, and IR receivers it is assigned to.

Setting Limits from an IR Transmitter

STEP 1

Aim the IR Transmitter at the IR Receiver integral to the keypad or CCI or wired to an EDU. Enter "Limit Set Mode" by pressing and holding the Open and Raise buttons. LEDs on the keypad and CCI will flash.

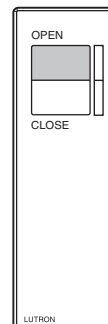


Press and hold Open and Raise for 5 seconds

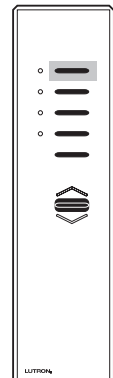


STEP 2

While aiming the IR Transmitter at the IR Receiver, select the shade to adjust by pressing and releasing the Open button on the IR Transmitter. Each time Open is pressed and released, an EDU assigned to the IR Receiver will begin raising and lowering over a short distance (fast cycle). Continue pressing open, until the desired EDU is selected (fast cycling). The Close button can be used to select shades, moving through shades in the opposite order. Depending on the installation, the EDU that is fast cycling may not be visible from where the IR Transmitter is.



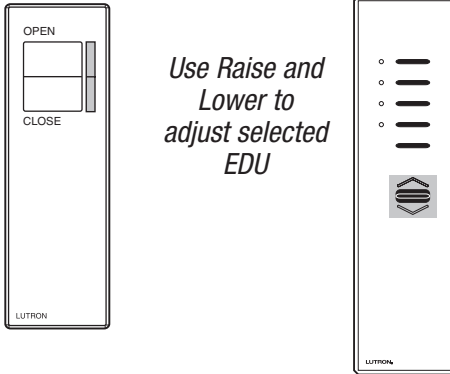
Press Open



Programming | Setting Limits from an IR Transmitter

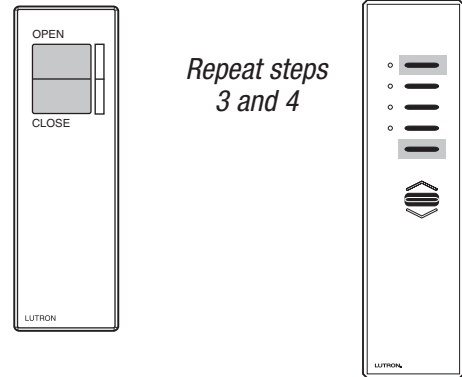
STEP 3

While aiming the IR Transmitter at the IR Receiver, adjust the EDU to the desired level, using the Raise and Lower buttons on the IR Transmitter.



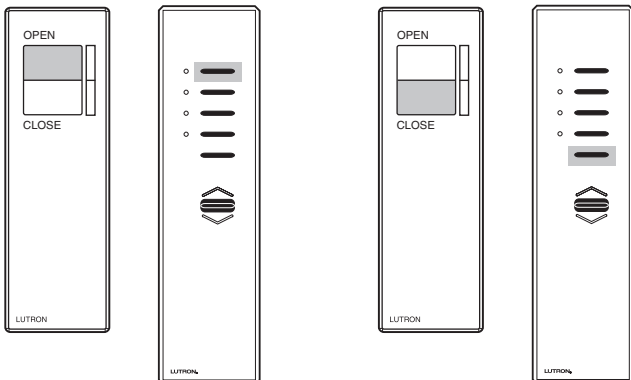
STEP 5

While aiming the IR Transmitter at the IR Receiver, use the Open or Close buttons to select other shades and adjust limits as in steps 3 and 4.



STEP 4

While aiming the IR Transmitter at the IR Receiver, store the current position as the Open Limit by pressing and holding the Open button on the IR Transmitter for 5 seconds. **OR** Store the current position as the Close Limit by pressing and holding the Close button on the IR Transmitter for 5 seconds.



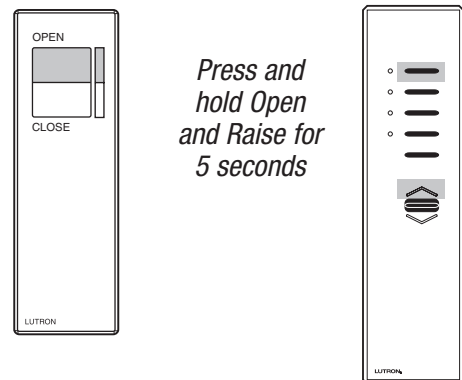
Press and hold Open to set the Open Limit

OR

Press and hold Close to set the Close Limit

STEP 6

While aiming the IR Transmitter at the IR Receiver, exit "Limit Set Mode" by pressing and holding the Open and Raise buttons for 5 seconds. LEDs on the EDU will turn OFF, LEDs on the keypad will stop flashing and return to previous state.



After addressing the system and setting limits, assign EDUs to each keypad, CCI, and IR receiver.