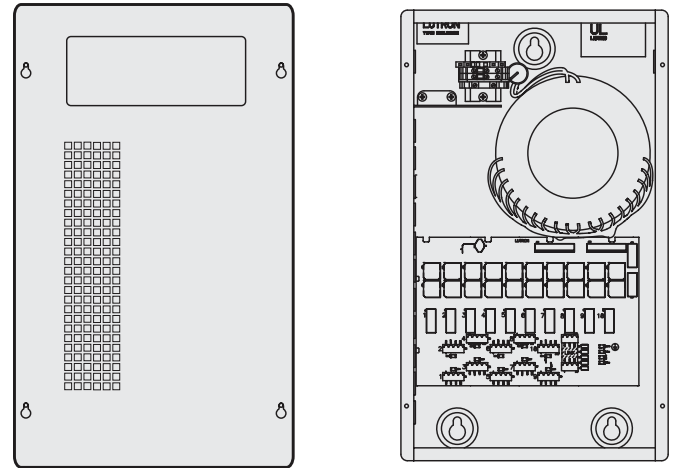


Sivoia QS | 120V Smart Panel power supply

The Sivoia QS Smart Panel power supply (QSPS-P1-10-60) is a 24 V_{DC} hardwired power supply that is used with Lutron® QS lighting or shading devices. QSPS-P1-10-60 simplifies the wiring and organizes installations that require multiple power supplies. Each panel contains ten 30 W (60 W peak) power supplies, designed for use with Lutron QS lighting and shading devices.

QSPS-P1-10-60 is designed to be hardwired into a standard 120 V_{AC} circuit. The panel contains fuses on each output to protect the device in the event of a miswire.



QSPS-P1-10-60
10 output Smart Panel power supply

Features

- 24 V_{DC} supply that provides power to shades, drapery drive units, keypads, and accessories
- Simple wiring scheme uses 4-conductor low voltage link to provide power and communication for both QS electronic drive units (EDUs) and seeTouch QS keypads
- Flexible wiring topology for easy installation and integration
- 10 output panel provides power for 10 to 30 shades based on shade dimensions
- Smart diagnostics reduce installation time and system verification
- Confirms system communication and facilitates system installation
- Provides easy system testing with manual override buttons for shades and lighting

Job Name:

Model Numbers:

Job Number:

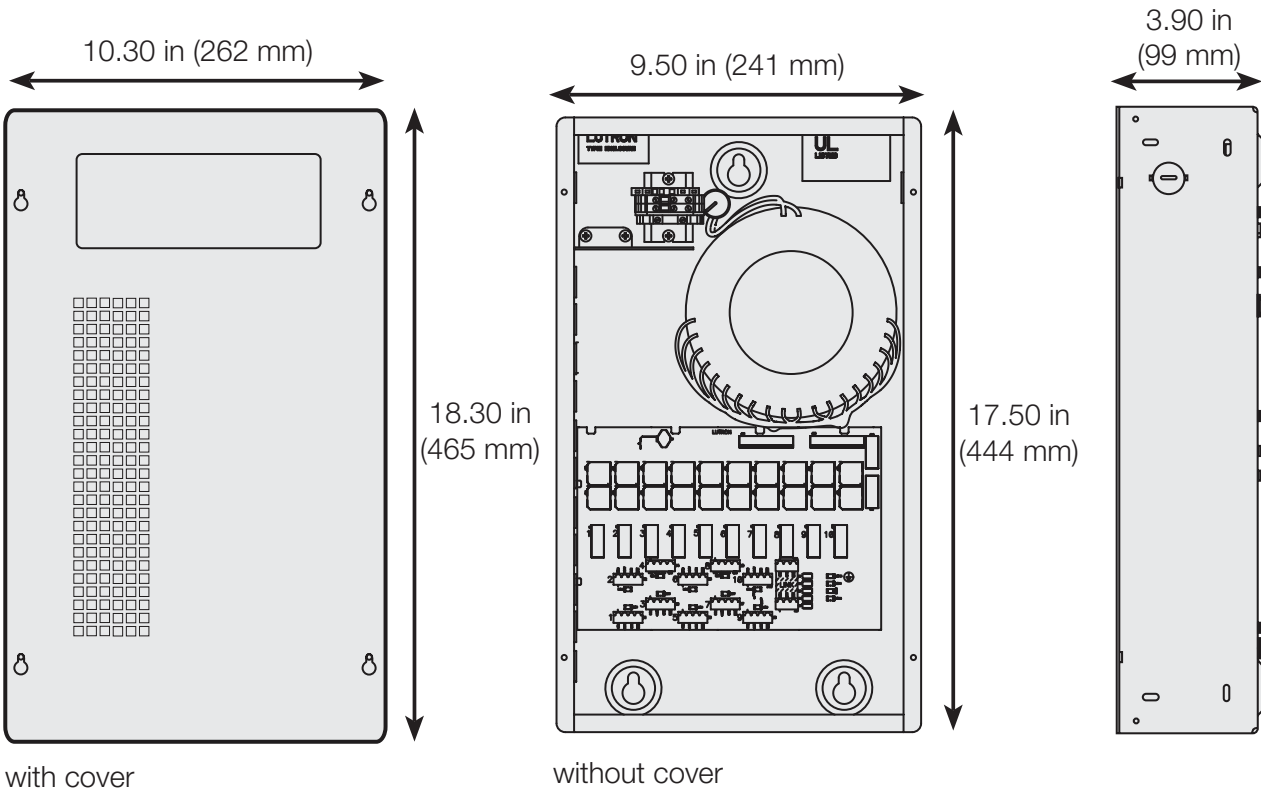
Specifications

Input Voltage	120 V~
Input current per QSPS-P1-10-60	6 A/Panel Note: use only high magnetic breakers
Output Voltage	24 V===
Output Current	2.5 A
Operating Frequency	60 Hz
ESD Protection	(+/-) 16kV
Miswire Protection	Fuse on each output 2 spares included (5x20mm, 2.5 A fuse)
Wiring	Input wires to 120 V~ supply, output wires to Lutron QS lighting or shading devices
Wiring type	Input wires: 10-14 AWG (6-2.5 mm ²) stranded Output wires: 4 conductor 12-26 AWG (4-0.15 mm ²) stranded, twisted/shielded
Connections	Terminal blocks
Maximum QSPS-P1-10-60	1 panel per dedicated 15 A circuit
Maximum QSPS-P1-10-60	2 panels per dedicated 20 A circuit
Maximum feed breaker size	30 A
Weight	25 lbs (11.3 kg)
Regulatory Approvals	UL Listed: #E42071
Industrial Control Equipment	Limited Voltage/Limited Current Circuit (NEC® approved class 2 power source)

Job Name:	Model Numbers:
Job Number:	

Dimensions

QSPS-P1-10-60

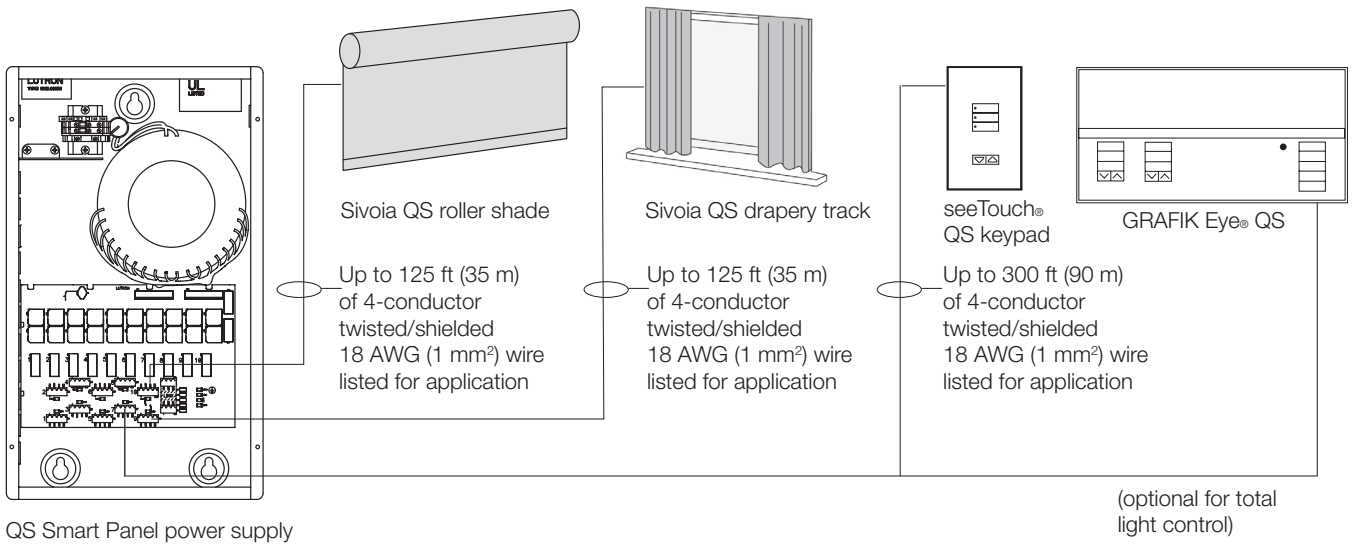


with cover

without cover

Job Name: Job Number:	Model Numbers:
------------------------------	----------------

System Wiring Overview: QS Smart Panel Power Supply



- Maximum 100 devices (Sivoia QS shades / drapery drive units, seeTouch QS keypads, GRAFIK Eye QS main units, and QS power supplies) per link
- Maximum 100 zones (Sivoia QS shades / drapery drive units and GRAFIK Eye QS lighting zones)

Job Name:	Model Numbers:
Job Number:	

QS Link Wiring

Link Rules

The following Link rules must be observed for proper operation.

- Maximum of 100 devices (such as a GRAFIK Eye® QS, seeTouch® QS keypad, smart panel power supply [QSPS-P1-10-60], or Sivoia® QS shade / drapery drive unit)
- Maximum of 100 zones - such as a Sivoia QS shade / drapery drive unit, or a lighting zone on a GRAFIK Eye QS
- Maximum 2000 ft (600 m) of cable connecting all QSPS-P1-10-60 panels
- Maximum 2000 ft (600 m) of cable to devices wired to each QSPS-P1-10-60
- Only use cable with at least one twisted/shielded pair for communications (MUX and $\overline{\text{MUX}}$)

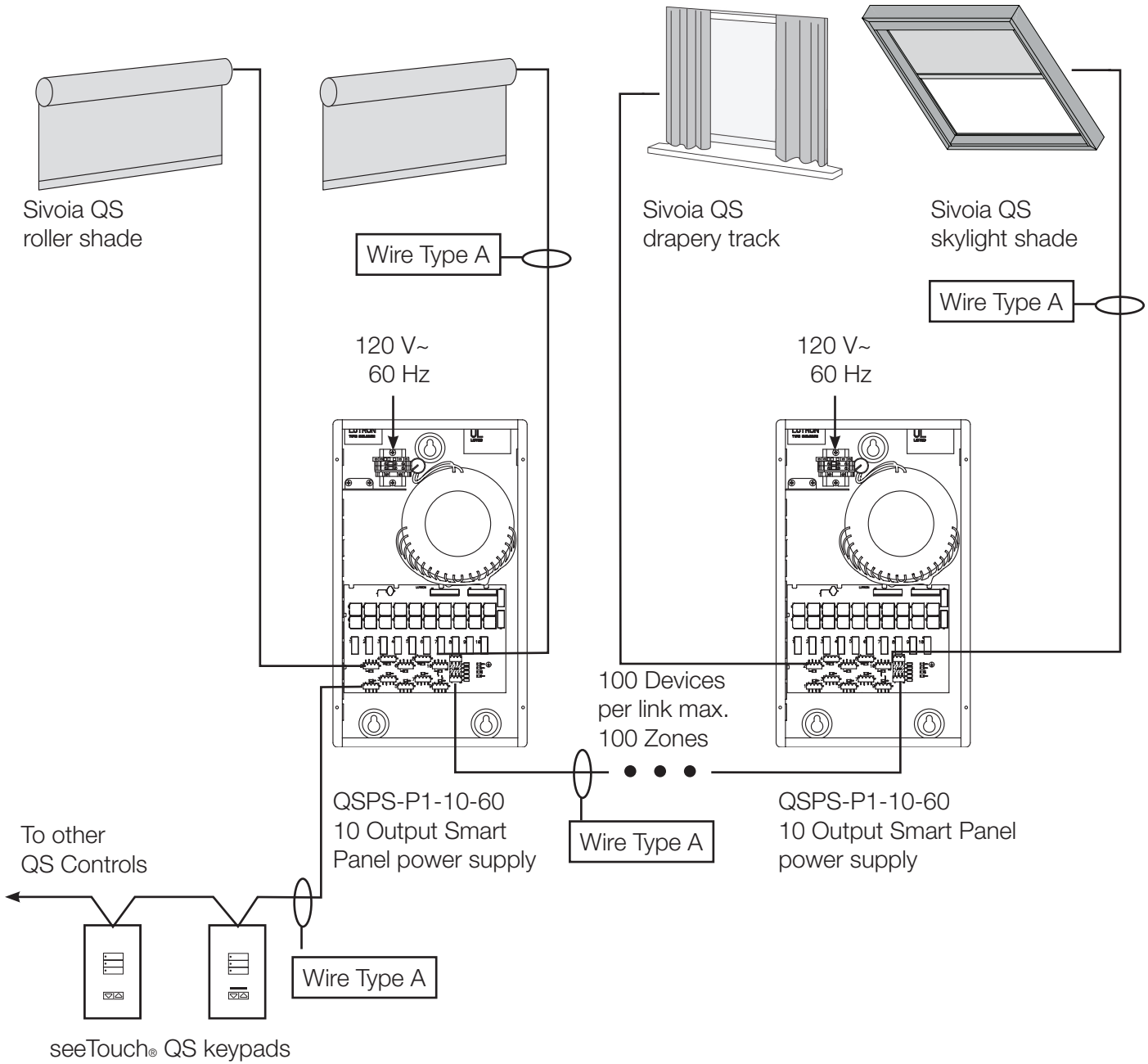
QS Smart Panel Power Supply Wiring Guide

Maximum devices per one output		Maximum distance per one output based on wire gauge		
Shades + Controls		12 AWG (4 mm ²) QSH-CBL-L-500 QSH-CBLP-L-500	16 AWG (1.5 mm ²) QSH-CBL-M-500 QSH-CBLP-M-500	18 AWG (1 mm ²) GRX-CBL-346S-500
None	Up to 8 seeTouch QS keypads	1200 ft (350 m)	500 ft (150 m)	300 ft (90 m)
1 Sivoia QS shade* / drapery drive unit	Up to 1 seeTouch QS keypad	500 ft (150 m)	200 ft (60 m)	125 ft (35 m)
2 Sivoia QS roller 64™, ≤ 30 sq ft (2.75 sq m) each	None	200 ft (60 m)	75 ft (20 m)	50 ft (15 m)
3 Sivoia QS roller 64, ≤ 20 sq ft (1.8 sq m) each	None			
2 Sivoia QS roller 100, ≤ 50 sq ft (4.6 sq m) each	None			

* roller 64, roller 100, roller 200CW, roller 225™, skylight

Job Name:	Model Numbers:
Job Number:	

Sivoia QS System Wiring: Smart Panel power supply, single shade per output



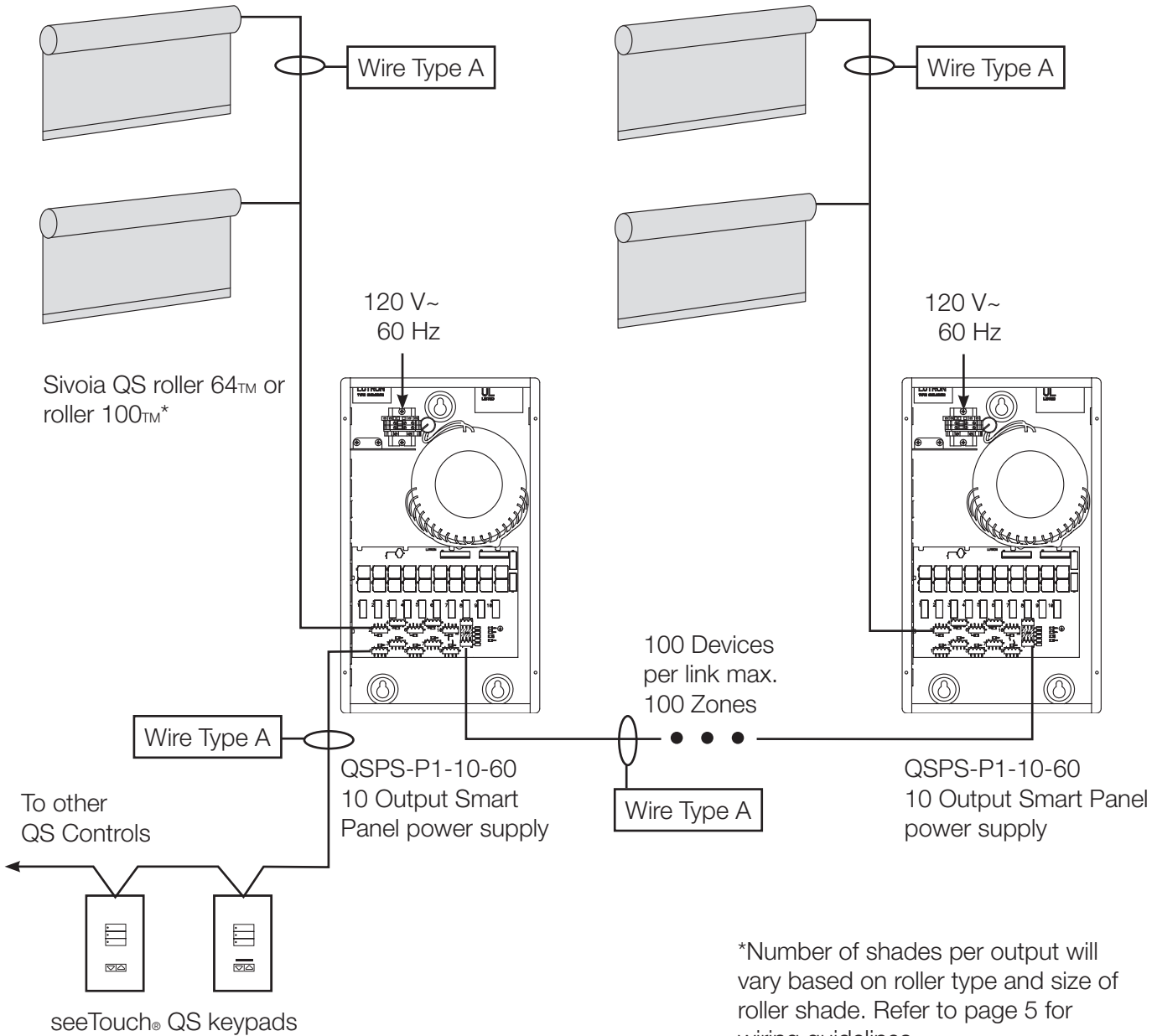
Wiring Type Key

Type A

Communications Link: 4 Conductor (twisted and shielded), listed for application
 Refer to wiring guide on pg. 5 for wire gauge based on distance
 Maximum comm. link: – Up to 2000 ft (600 m) connecting
 all QSPS-P1-10-60 panels

Job Name:	Model Numbers:
Job Number:	

Sivoia QS System Wiring: Smart Panel power supply, two shades per output*



*Number of shades per output will vary based on roller type and size of roller shade. Refer to page 5 for wiring guidelines

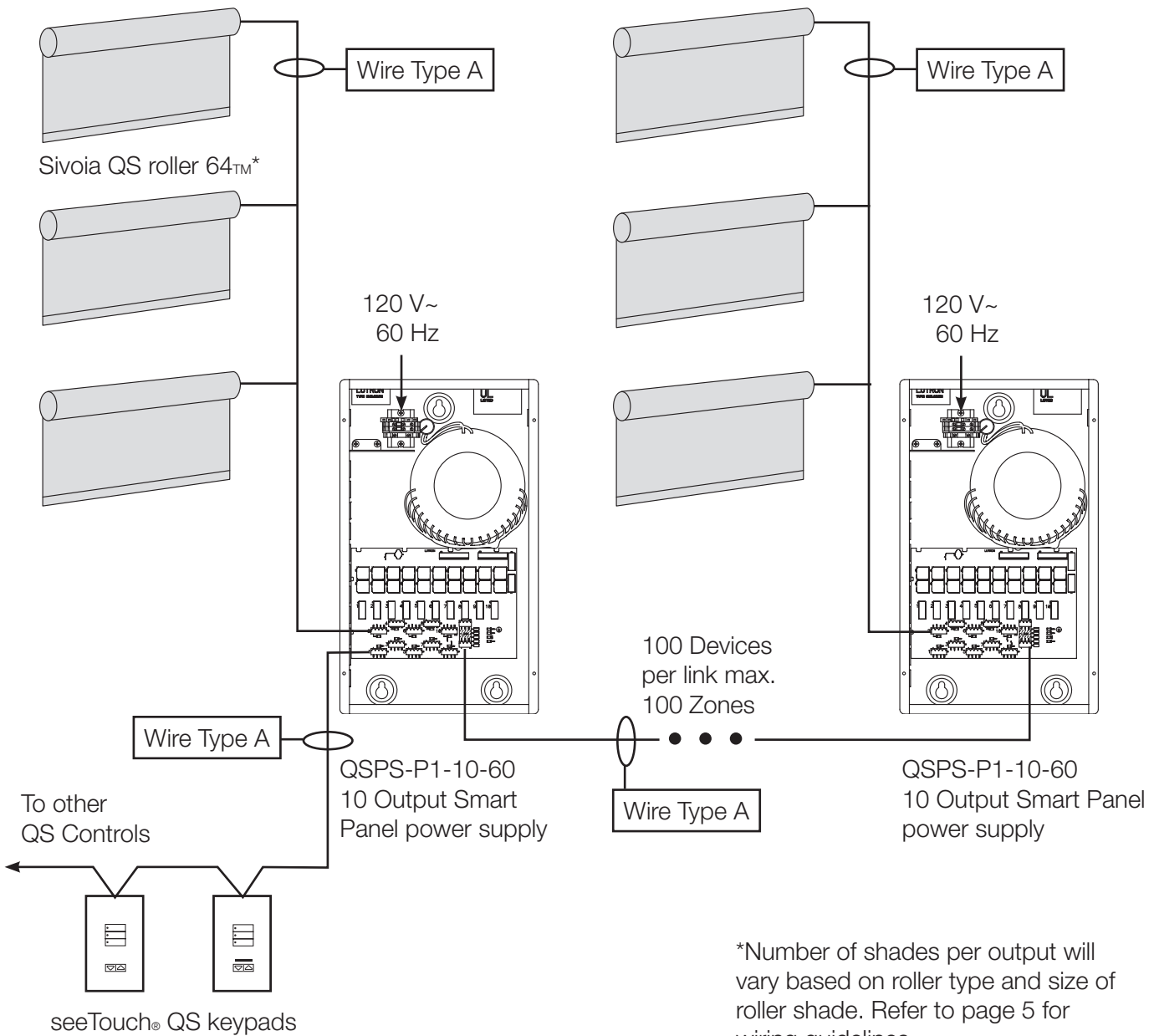
Wiring Type Key

Type A

Communications Link: 4 Conductor (twisted and shielded), listed for application
 Refer to wiring guide on pg. 5 for wire gauge based on distance
 Maximum comm. link: – Up to 2000 ft (600 m)
 connecting all QSPS-P1-10-60 panels

Job Name:	Model Numbers:
Job Number:	

Sivoia QS System Wiring: Smart Panel power supply, three shades per output*



*Number of shades per output will vary based on roller type and size of roller shade. Refer to page 5 for wiring guidelines

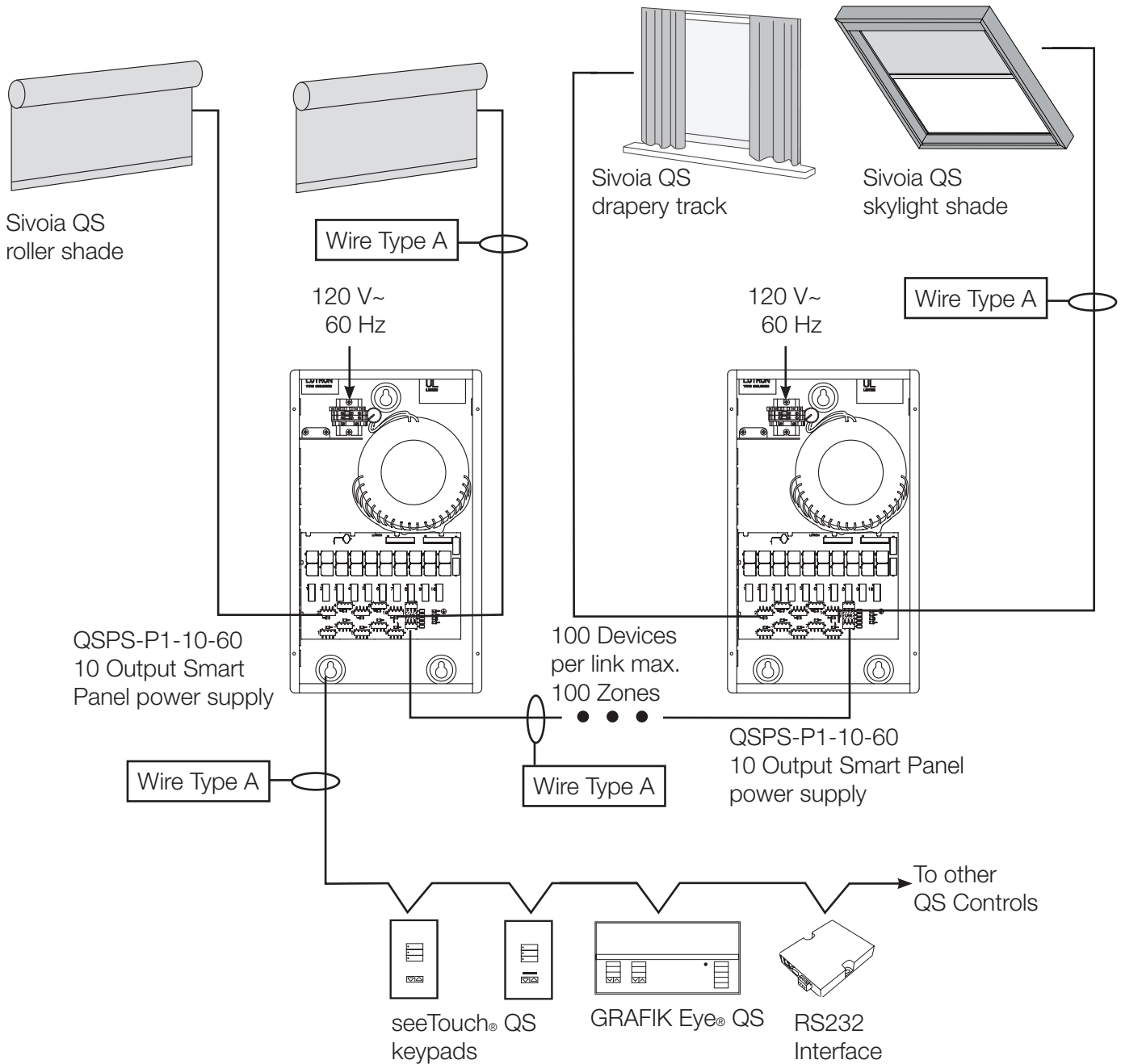
Wiring Type Key

Type A

Communications Link: 4 Conductor (twisted and shielded), listed for application
Refer to wiring guide on pg. 5 for wire gauge based on distance
Maximum comm. link: – Up to 2000 ft (600 m)
connecting all QSPS-P1-10-60 panels

Job Name:	Model Numbers:
Job Number:	

**Sivoia QS with GRAFIK Eye® QS System Wiring:
Smart Panel power supply, single shade per output**



Wiring Type Key

Type A

Communications Link: 4 Conductor (twisted and shielded), listed for application
 Refer to wiring guide on pg. 5 for wire gauge based on distance
 Maximum comm. link: – Up to 2000 ft (600 m)
 connecting all QSPS-P1-10-60 panels

Job Name:	Model Numbers:
Job Number:	

Limited Warranty

SCOPE

This limited warranty (“Warranty”) covers the Lutron supplied (a) Sivoia® QS Shade System (“Sivoia® QS Shade System”), (b) Sivoia QED® Shade System (“Sivoia QED® Shade System”), (c) manual shade system and (d) alternating current or a/c shade system (each of the foregoing being a “System”). Customer acknowledges and agrees that use of the System constitutes acceptance of all terms and conditions of this Warranty.

LIMITED WARRANTY

Subject to the exclusions and restrictions described below, Lutron warrants that each System will be free from manufacturing defects from the date of shipment by Lutron for a period of (a) one year as to the wall controls, interfaces, and system accessories of the Sivoia QS Shade System (“External Sivoia QS Components”) and (b) eight years as to the other Systems and the electronic drive unit (EDU), shade fabric, and shade hardware of the Sivoia QS Shade System. If any manufacturing defect exists in the External Sivoia QS Components, so long as Customer promptly notifies Lutron of the defect within the one year warranty period and, if requested by Lutron, returns the defective part(s), Lutron will, at its option, either repair the defective part(s) or provide comparable replacement part(s). If any manufacturing defect exists in any of the components of a System other than the External Sivoia™ QS Components, so long as Customer promptly notifies Lutron of the defect within the eight year warranty period and, if requested by Lutron, returns the defective part(s), Lutron will, at its option, either repair the defective part(s) or issue a credit to the Customer against the purchase

price of comparable replacement part(s) purchased from Lutron as provided below:

Number of Years from Date of Shipment	Percentage of Cost of Replacement Parts Credited by Lutron
Up to 2	100%
More than 2 but not more than 5	50%
More than 5 but not more than 8	25%
More than 8	0%

Replacement parts for the System provided by Lutron or, at its sole discretion, an approved vendor may be new, used, repaired, reconditioned, and/or made by a different manufacturer.

EXCLUSIONS AND RESTRICTIONS

This Warranty will be void, and Lutron and its suppliers will have no responsibility under this Warranty, if Lutron or its representatives cannot access any components of the System to inspect, diagnose problems with or repair the System or any of its components as a result of concealment or inaccessibility of such components within a building structure.

This Warranty does not cover, and Lutron and its suppliers are not responsible for:

1. Damage, malfunction or inoperability diagnosed by Lutron or a Lutron approved third party as caused by normal wear and tear, abuse, misuse, incorrect installation, neglect, accident, interference or environmental factors, such as (a) use of incorrect line voltages fuses or circuit breakers; (b) failure to install, maintain and operate the System pursuant to the operating instructions provided by Lutron and the applicable provisions of the National Electrical Code and of the Safety Standards of

Job Name:	Model Numbers:
Job Number:	

Limited Warranty (continued)

Underwriter's Laboratories; (c) use of incompatible devices or accessories; (d) improper or insufficient ventilation; (e) unauthorized repairs or adjustments or alterations; (f) vandalism; (g) an act of God, such as fire, lightning, flooding, tornado, earthquake, hurricane or other problems beyond Lutron's control; or (h) direct exposure to corrosive materials.

2. On-site labor costs to diagnose issues with, and remove, repair, replace, adjust, reinstall and/or reprogram the System or any of its components.

3. Components and equipment external to the System, such as, non-Lutron lighting and automation systems; building wiring audio-visual equipment; and non-Lutron time clocks, photosensors and motion detectors.

4. The cost of repairing or replacing other property that is damaged when any System does not work properly, even if the damage was caused by the System.

THIS WARRANTY IS IN LIEU OF ALL OTHER EXPRESS WARRANTIES. ALL IMPLIED WARRANTIES OF MERCHANTABILITY AND OF FITNESS FOR A PARTICULAR PURPOSE, ARE LIMITED TO EIGHT YEARS FROM THE DATE OF SHIPMENT, EXCEPT THAT SUCH IMPLIED WARRANTIES ARE LIMITED TO ONE YEAR FROM THE DATE OF SHIPMENT AS TO THE EXTERNAL SIVOIA COMPONENTS.

NO LUTRON AGENT, EMPLOYEE OR REPRESENTATIVE HAS ANY AUTHORITY TO BIND LUTRON TO ANY AFFIRMATION, REPRESENTATION OR WARRANTY CONCERNING THE SYSTEMS. UNLESS AN AFFIRMATION, REPRESENTATION OR WARRANTY MADE BY AN AGENT, EMPLOYEE OR REPRESENTATIVE IS SPECIFICALLY INCLUDED HEREIN, OR IN STANDARD PRINTED MATERIALS PROVIDED BY LUTRON, IT DOES NOT FORM A PART OF THE BASIS OF ANY BARGAIN BETWEEN LUTRON AND CUSTOMER AND WILL NOT IN ANY

WAY BE ENFORCEABLE BY CUSTOMER.

IN NO EVENT WILL LUTRON OR ANY OTHER PARTY BE LIABLE FOR EXEMPLARY, CONSEQUENTIAL, INCIDENTAL OR SPECIAL DAMAGES (INCLUDING, BUT NOT LIMITED TO DAMAGES FOR PERSONAL INJURY, FAILURE TO MEET ANY DUTY, INCLUDING OF GOOD FAITH OR REASONABLE CARE, NEGLIGENCE, OR ANY OTHER LOSS WHATSOEVER), NOR FOR ANY REPAIR WORK UNDERTAKEN WITHOUT LUTRON'S PRIOR WRITTEN CONSENT ARISING OUT OF OR IN ANY WAY RELATED TO THE INSTALLATION, DEINSTALLATION, USE OF OR INABILITY TO USE THE SYSTEM OR OTHERWISE UNDER OR IN CONNECTION WITH ANY PROVISION OF THIS WARRANTY, EVEN IN THE EVENT OF THE FAULT, TORT (INCLUDING NEGLIGENCE), STRICT LIABILITY, BREACH OF CONTRACT OR BREACH OF WARRANTY OF LUTRON OR ANY OTHER PARTY, AND EVEN IF LUTRON OR SUCH OTHER PARTY WAS ADVISED OF THE POSSIBILITY OF SUCH DAMAGES.

NOTWITHSTANDING ANY DAMAGES THAT CUSTOMER MIGHT INCUR FOR ANY REASON WHATSOEVER (INCLUDING, WITHOUT LIMITATION, ALL DIRECT DAMAGES AND ALL DAMAGES LISTED ABOVE), THE ENTIRE LIABILITY OF LUTRON AND OF ALL OTHER PARTIES UNDER THIS WARRANTY ON ANY CLAIM FOR DAMAGES ARISING OUT OF OR IN CONNECTION WITH THE MANUFACTURE, SALE, INSTALLATION, DELIVERY, USE, REPAIR, OR REPLACEMENT OF THE SYSTEM, AND CUSTOMER'S SOLE REMEDY FOR THE FOREGOING, WILL BE LIMITED TO THE AMOUNT PAID BY CUSTOMER FOR THE SYSTEM. THE FOREGOING LIMITATIONS, EXCLUSIONS AND DISCLAIMERS WILL APPLY TO THE MAXIMUM EXTENT ALLOWED BY APPLICABLE LAW, EVEN IF ANY REMEDY FAILS ITS ESSENTIAL PURPOSE.

Job Name:	Model Numbers:
Job Number:	

Limited Warranty (continued)

THIS WARRANTY GIVES YOU SPECIFIC LEGAL RIGHTS. YOU MAY ALSO HAVE OTHER RIGHTS WHICH VARY FROM STATE TO STATE. SOME STATES DO NOT ALLOW LIMITATIONS ON HOW LONG AN IMPLIED WARRANTY LASTS OR THE EXCLUSION OR LIMITATION OF INCIDENTAL OR CONSEQUENTIAL DAMAGES, SO THE ABOVE LIMITATIONS OR EXCLUSIONS MAY NOT APPLY TO YOU.

WARRANTY CLAIMS, TECHNICAL ASSISTANCE AND WARRANTY INFORMATION.

Contact the Lutron Technical Support Center at the numbers provided on the following page or your local Lutron sales representative with questions concerning the installation or operation of the System or this Warranty, or to make a warranty claim. Please provide the exact model number when calling.

Lutron, the Sunburst logo, Sivoia and Sivoia QED are registered trademarks of Lutron Electronics Co., Inc.

Job Name: Job Number:	Model Numbers:
------------------------------	----------------

Technical and Sales Assistance

WORLD HEADQUARTERS

Lutron Electronics Co., Inc.
7200 Suter Road
Coopersburg, PA 18036
United States
Tel: +1.610.282.3800
Fax: +1.610.282.1243

ASIAN HEADQUARTERS

Lutron GL Ltd.
15 Hoe Chiang Road
#07-03 Tower Fifteen
Singapore 089316
Tel: +65.6220.4666
Fax: +65.6220.4333
lutronsea@lutron.com

EUROPEAN HEADQUARTERS

Lutron EA Ltd.
6 Sovereign Close
London, E1W 3JF
United Kingdom
Tel: +44.(0)20.7702.0657
Fax: +44.(0)20.7480.6899

CUSTOMER SERVICE/ORDERING

USA +1.610.282.3800 –
08.00 - 20.00 EST
UK +44.(0)20.7702.0657 –
09.00 - 18.00 GMT

CUSTOMER SERVICE /E-MAIL

shadinginfo@lutron.com

TECHNICAL SUPPORT & SERVICES

USA +1.610.282.3800 –
24 hours/7 days
UK +44.(0)20.7702.0657
09.00 - 18.00 GMT

INTERNET:

www.lutron.com

ADDITIONAL LUTRON SALES OFFICES:

Germany

Tel: +49.309.710.4590
Fax: +49.309.710.4591
FREEPHONE
00800-5887 6635

France

Lutron LTC, S.A.R.L.
90 rue de Villiers
92300 Levallois-Perret, France
Tel: +33.(0)1.41.05.42.80
Fax: +33.(0)1.41.05.01.80
FREEPHONE: 0800.90.12.18
lutronfrance@lutron.com

Spain-Madrid

Tel: +34.91.567.84.79
Fax: +34.91.567.84.78
FREEPHONE 0900.948.944

Spain-Barcelona

Tel: +34.93.496.57.42
Fax: +34.93.496.57.50
FREEPHONE 0900.948.944

Hong Kong

Tel: +852.2104.7733
Fax: +852.2104.7633

Beijing

Tel: +86.10.5877.1817
Fax: +86.10.5877.1816

Shanghai

Tel: +86.21.6288.1473
Fax: +86.21.6288.1751

Singapore

LUTRON GL Ltd. - Singapore
15 Hoe Chiang Road
#7-03 Tower 15
Singapore 089316
Tel: +65.6220.4666
Fax: +65.6220.4333

Japan

Tel: +81.3.5575.8411
Fax: +81.3.5575.8420

www.lutron.com/shadingsolutions

USA and Canada (24 hrs/7days):

call: 800.523.9466

Other countries (8 a.m. – 8 p.m. ET)

call: +1 610.282.3800

fax: +1 610.282.3090

email: shadinginfo@lutron.com

Shades Customer Service

USA and Canada (24 hrs/7days):

call: 800.446.1503

©2009 LUTRON Electronics Co., Inc.

Specification Submittal Sheet
for QS Smart Panel power supply

<p>Job Name:</p> <p>Job Number:</p>	<p>Model Numbers:</p>
--	-----------------------